

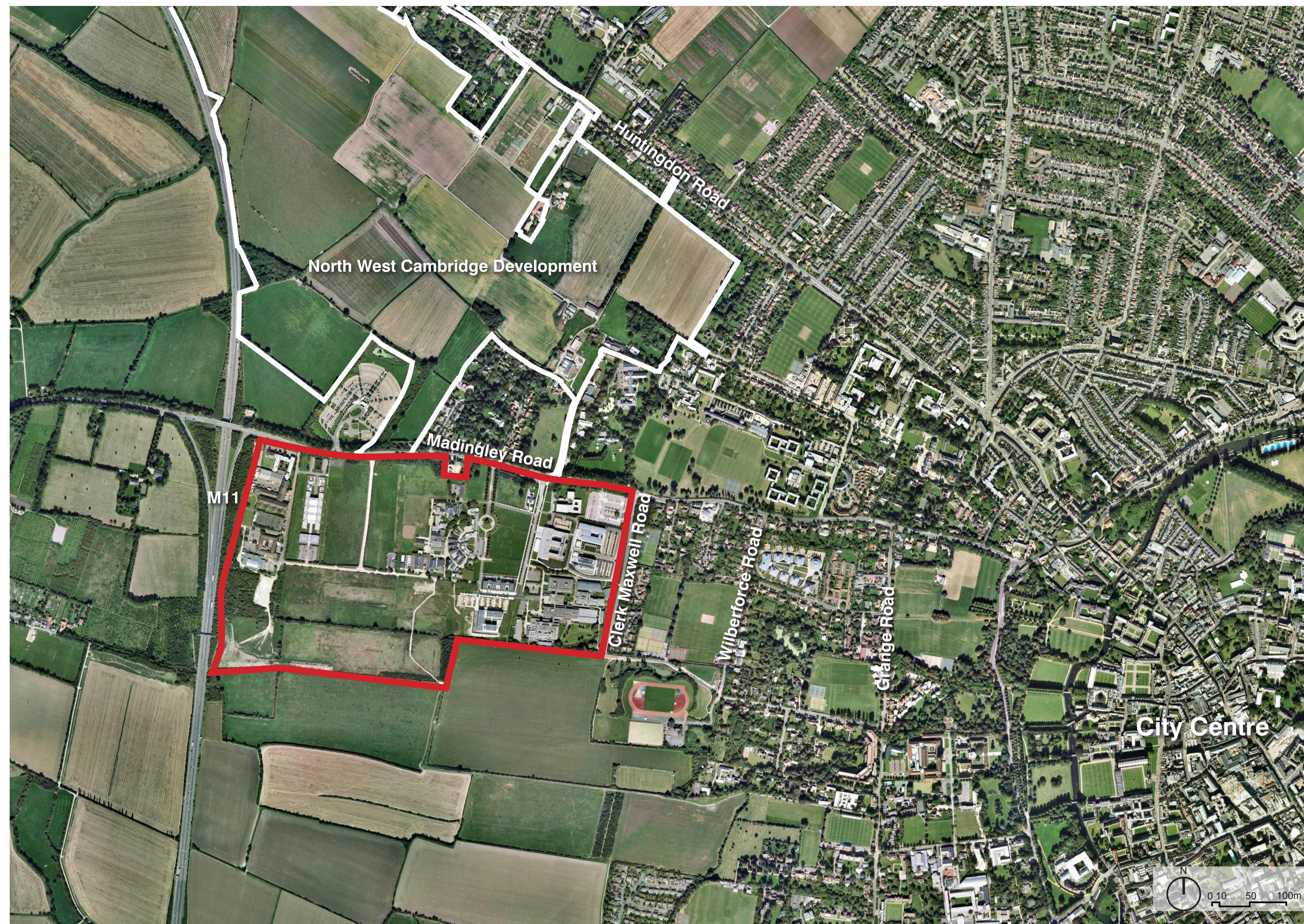
West Cambridge Masterplan

Introduction

West Cambridge, to the south of Maddingley Road, is already a focus for academic and commercial research and academic-commercial collaboration. The University of Cambridge has begun work on a new masterplan for the site to realise the full potential of West Cambridge as a globally significant location for academic and commercial research.

West Cambridge is identified as an Area of Major Change in the City Council's draft Local Plan. Policy 18 supports a new masterplan for the site to promote greater intensity of development and an improved environment for existing and future occupiers.

These boards summarise the University's vision for West Cambridge and present early thinking on the masterplan. We are seeking views on these before working up the proposals in the form of a planning application to be submitted in the summer.



Existing Site

West Cambridge is home to a number of major academic research occupiers including the Cavendish Laboratories, the Whittle Laboratory and Department of Veterinary Medicine. Commercial research occupiers to the western side of the site include Schlumberger, Aeva and British Antarctic Survey.

Development at West Cambridge has taken place over a long period since the 1960s. This piece-meal approach has:

- held back collaboration between academic departments and between academic users and commercial research occupiers
- led to an inconsistent approach to design, so the site today lacks a clear character or sense of place, with relatively low density development and large areas of surface car parking
- led to a reliance on access by private car, with relatively poor public transport access
- made it difficult to provide social facilities (shops, cafes, restaurants) for users on the site

A planning permission granted in 1999 provides the current framework for the development of the site, but this has proved inflexible in response to changing University and occupier requirements.

