

Shared Facilities Hub Project Overview



Site Masterplan showing the location of the new Shared Facilities Hub



Aerial view of the existing paddock with the site highlighted in red



View of the new Hub building from J.J. Thomson Gardens

Through the new Masterplan the University have committed to enhancing the community on West Cambridge. This proposal is for the first of the planned 'Hubs' on the site, representing a new model for the delivery of amenities and facilities, whereby these are not provided internally within academic departments or commercial occupiers, but are delivered as a shared resource, which is available for use by all site users, including residents and the general public. It is the aim that these new 'hubs' bring vibrancy and a sense of place to the West Cambridge Site.

The Shared Facilities Hub is a unique building on the West Cambridge site, as it will be the first non-departmental facility to provide primary amenity facilities for use by everyone from the university, as well as to all members of the public. It aims to help encourage collaboration whilst making more efficient use of resources. The building uses are more social in nature and will be outward facing rather than internalised with the range of facilities based around the themes of nourish, study and collaboration. The building is located in a prominent location directly overlooking both J.J. Thomson Avenue and the new J.J. Thomson Gardens which will be a newly landscaped outdoor amenity space to benefit all site users.

- Accessible to all**
 - Inclusive to all staff, students and public
 - Inclusive to all ages and abilities
 - Extended opening
 - Creates and supports diverse communities
- Stimulate connection and collaboration**
 - Allows for serendipitous connections
 - Supports activities for varied user groups
 - Inspires and delights in form and function
- Designed for flexibility**
 - Long term adaptable internal spaces
 - Short term flexibility
 - Spaces supporting more than one activity
 - Future capability to leverage technology evolution
- Efficient and Sustainable**
 - BREEAM compliant
 - Supports health and wellbeing

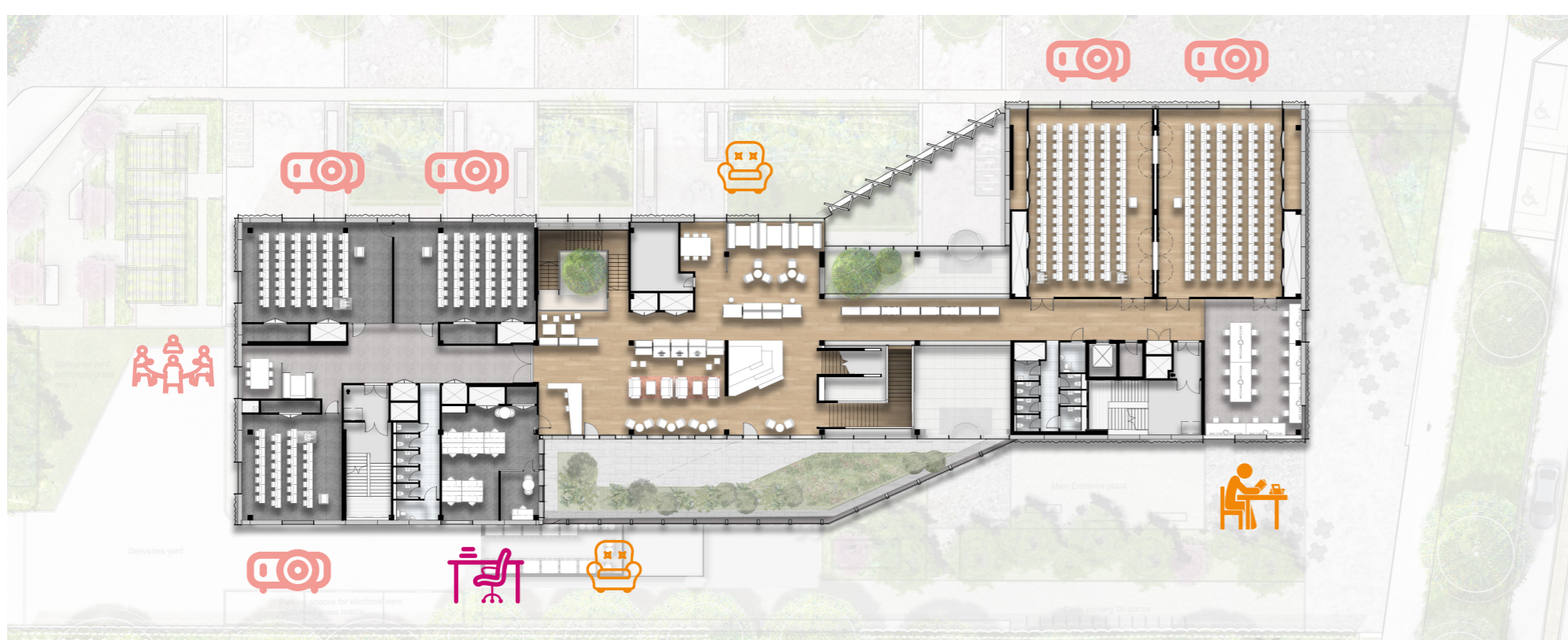


Visual of building approaching from the north along J.J. Thomson Avenue



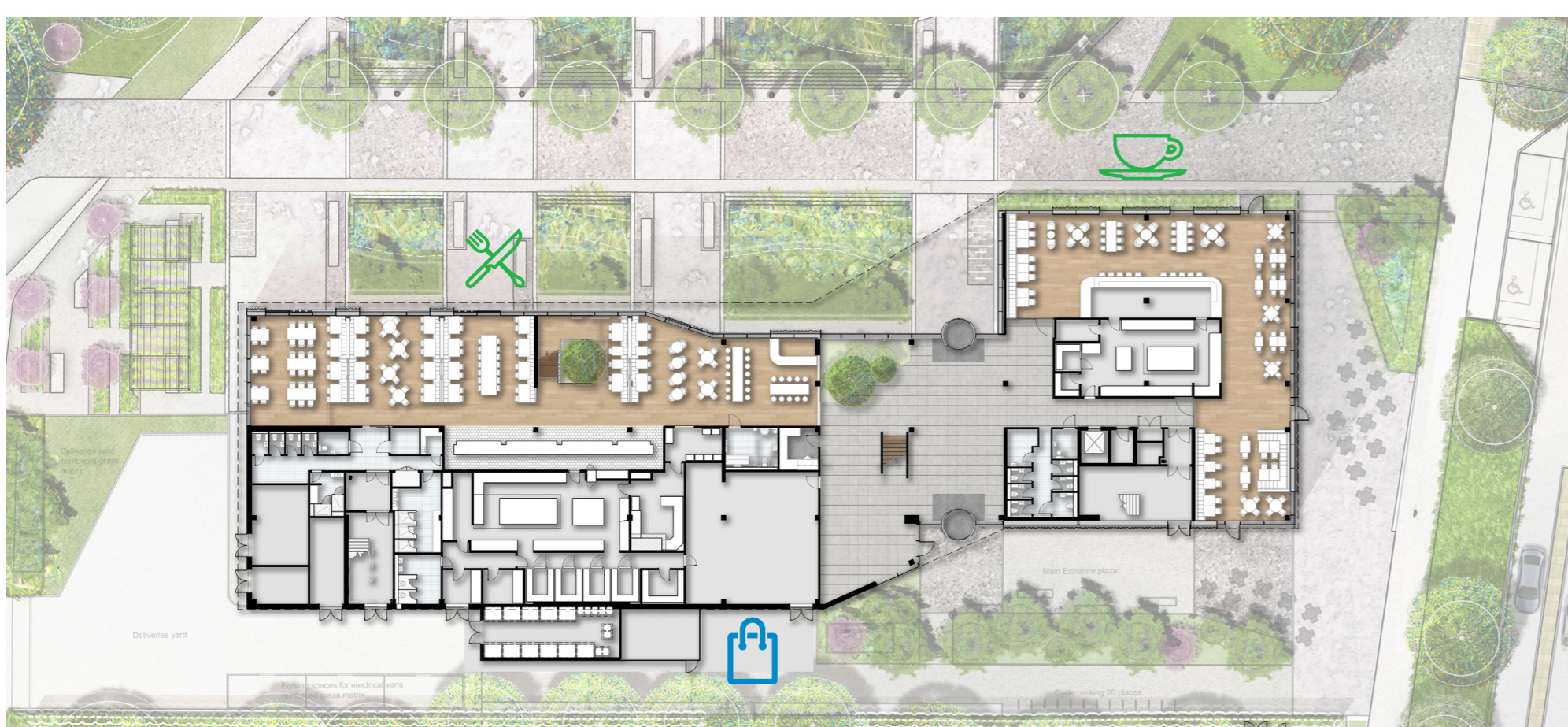
Second Floor

- High Intensity Study
- Medium Intensity Study
- Meeting Spaces



First Floor

- Teaching Spaces
- Low Intensity Study
- Library Offices



Ground Floor

- Cafe Bar
- Cafeteria
- Shop



A section through the main entrance and atrium in the new building



Visual of the new cafe bar at the corner of J.J. Thomson Avenue and the new park